

Delisha
CREATIONS

TOP
ORGANZA EMBROIDERY
BOTTOM-INNER
SHANTUN
DUPATTA
ORGANZA EMBROIDERY



D.NO.192 A



D.NO.192 B



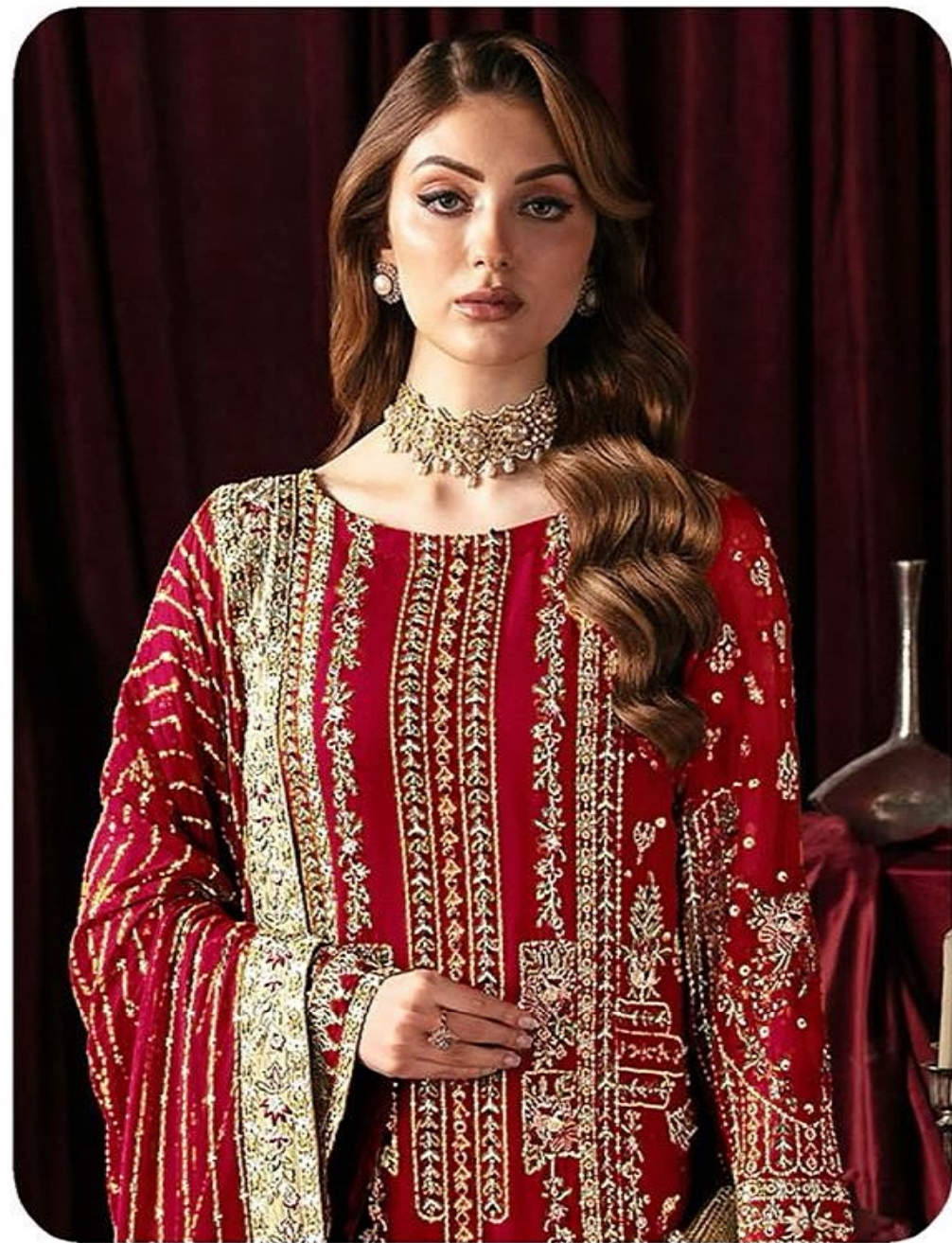
D.NO.192 C



D.NO.192 D

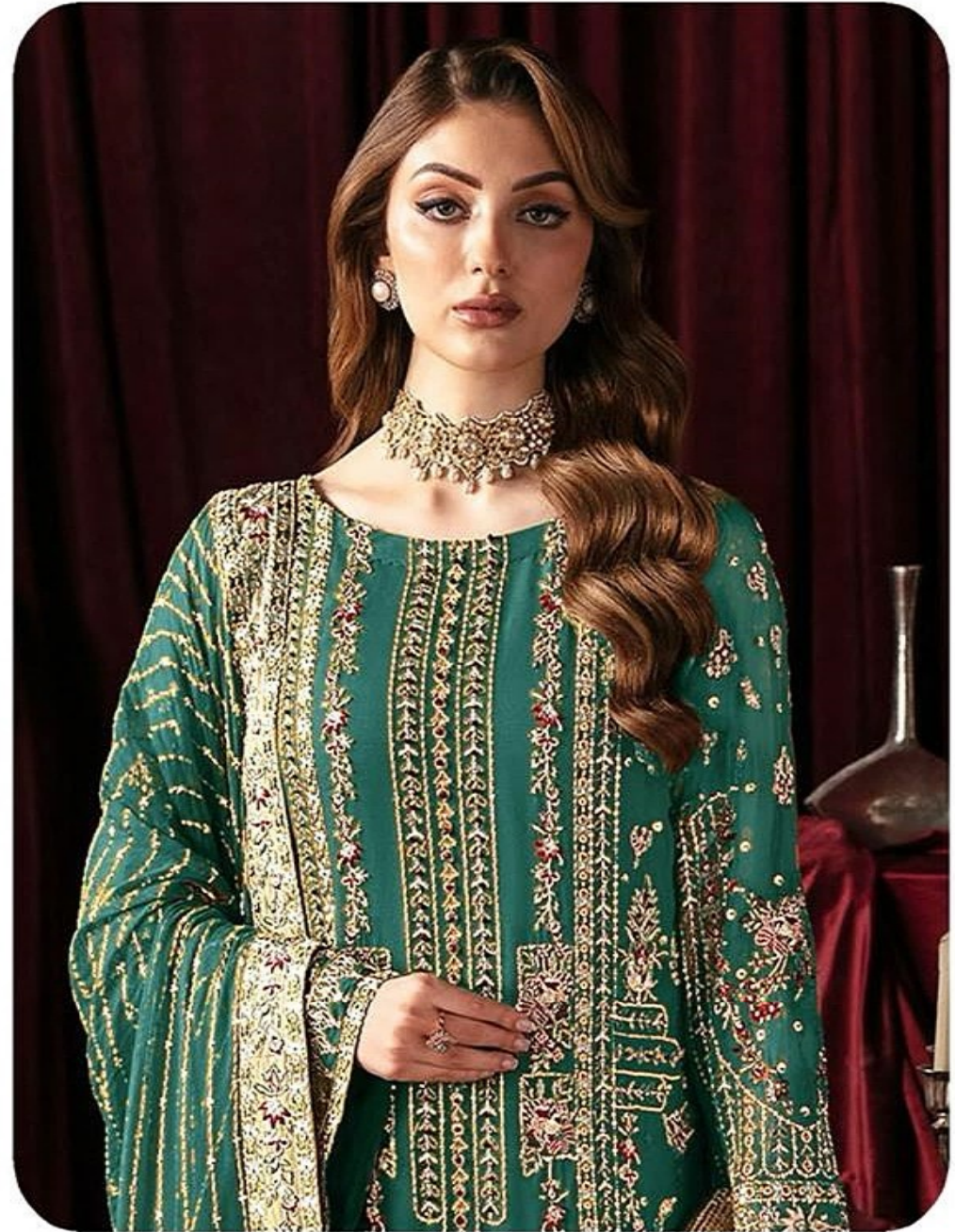


DUPATTA
ORGANZA EMBROIDERY



WASHING INSTRUCTIONS
DO NOT USE ANY TYPE OF BLEACH OR STAIN REMOVING CHEMICALS
BEFORE CUTTING, LASTINGING, FERRIS SHOULD BE COVERED BY WATER

CHARITON
DUPATTA
ORGANZA EMBROIDERY



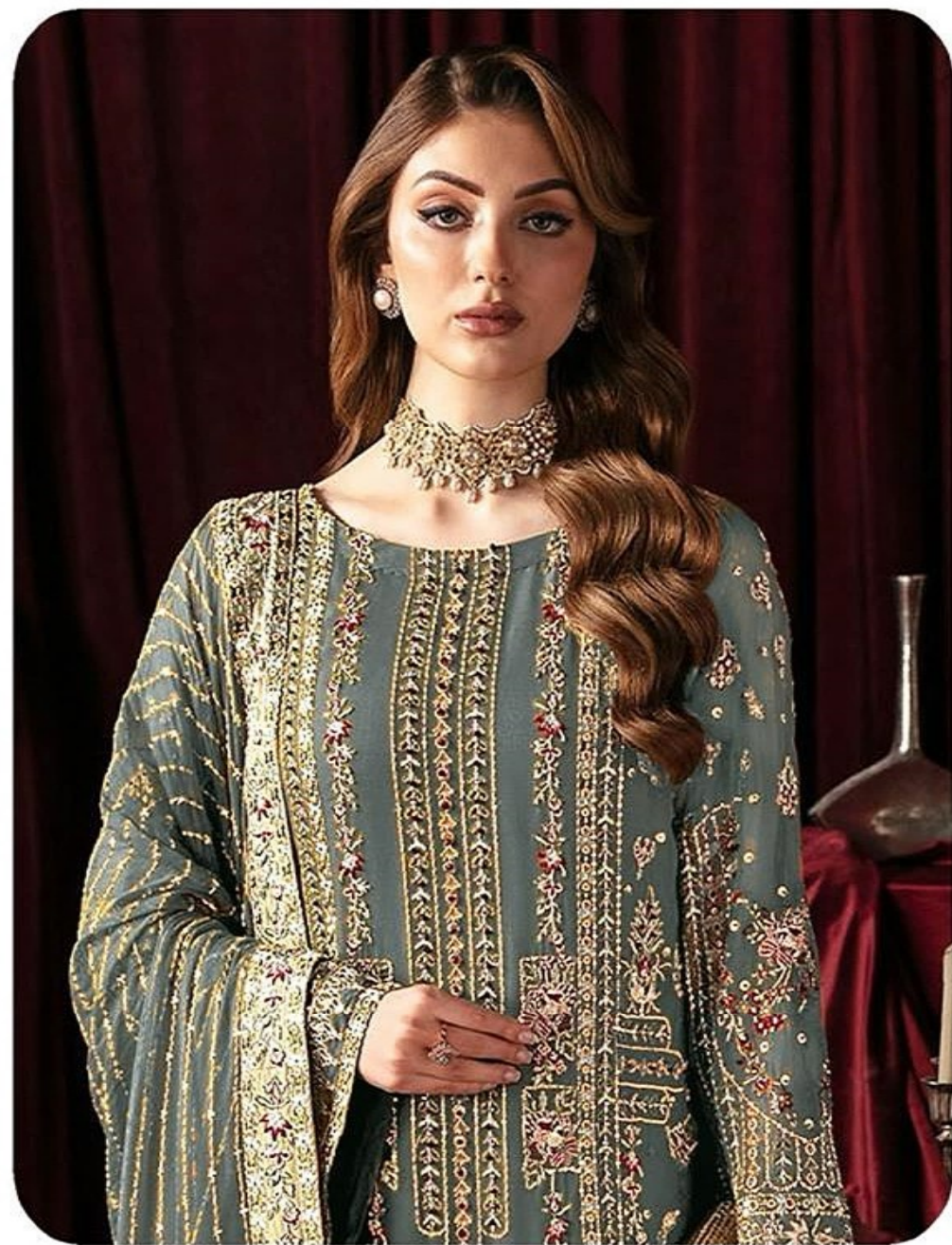
WASHING INSTRUCTIONS

DO NOT USE ANY TYPE OF BLEACH OR STAIN REMOVING CHEMICALS

BEFORE CUTTING / SEWING, FABRIC SHOULD BE SOAKED IN WATER

CHARITON

DUPATTA ORGANZA EMBROIDERY

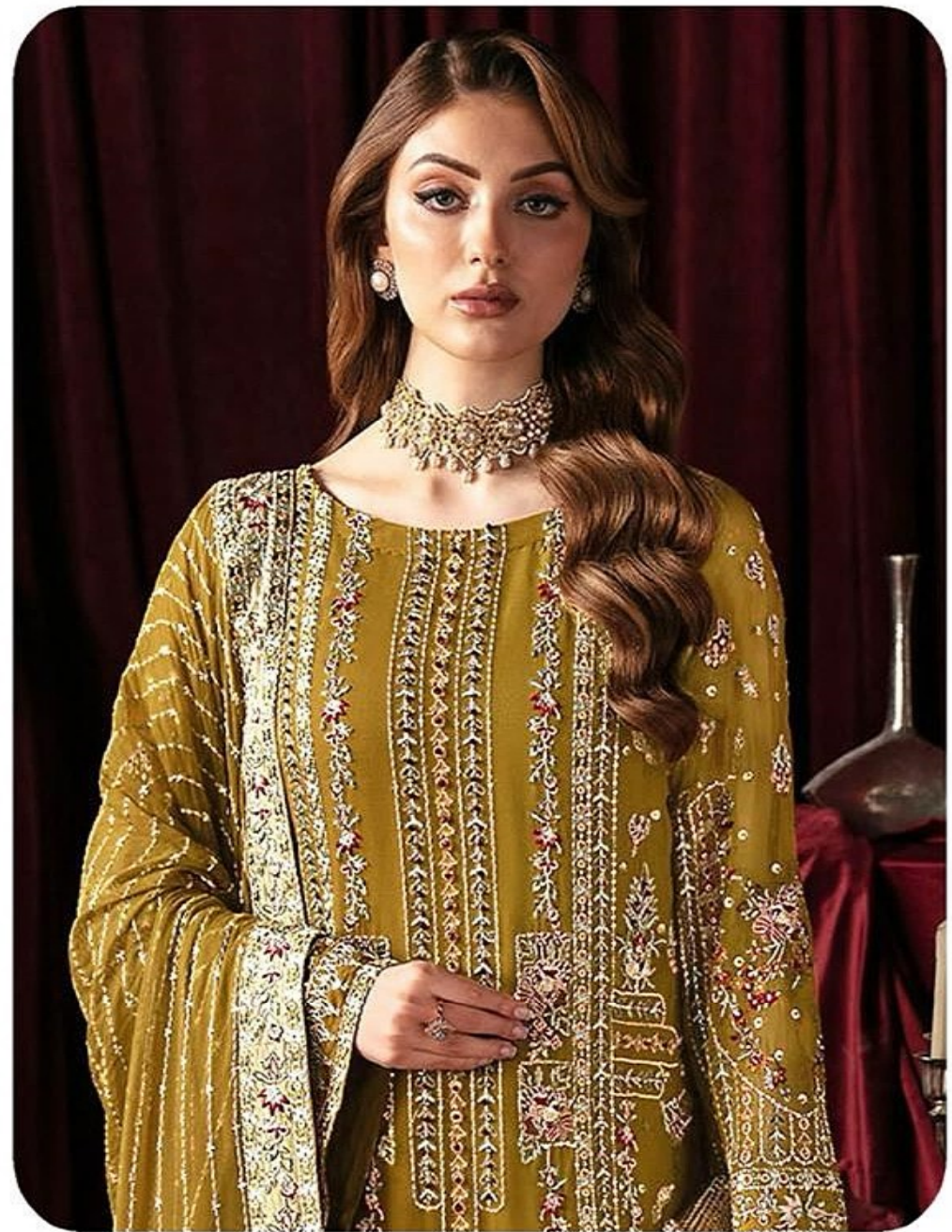


WASHING INSTRUCTIONS

DO NOT USE ANY TYPE OF BLEACH OR STAIN REMOVING CHEMICALS

BEFORE CUTTING / SEWING, FABRIC SHOULD BE SOAKED IN WATER

CHARITON
DUPATTA
ORGANZA EMBROIDERY



WASHING INSTRUCTIONS

DO NOT USE ANY TYPE OF BLEACH OR STAIN REMOVING CHEMICALS

BEFORE CUTTING / SEWING, FABRIC SHOULD BE SOAKED IN WATER