



 **Zulfat**<sup>®</sup>  
Designer Suits

Style is knowing what suits you who  
you are, and what your assets are.  
It's accepting it all.

538-005



Style is knowing what suits you, who you are, and what your assets are. It's accepting it all.

538-006





 **Zulfat**<sup>®</sup>  
Designer Suits

538-007

'Style is knowing what suits you, who you are, and what your assets are. It's accepting it all.'



538-001



538-002



538-003



538-004



538-005



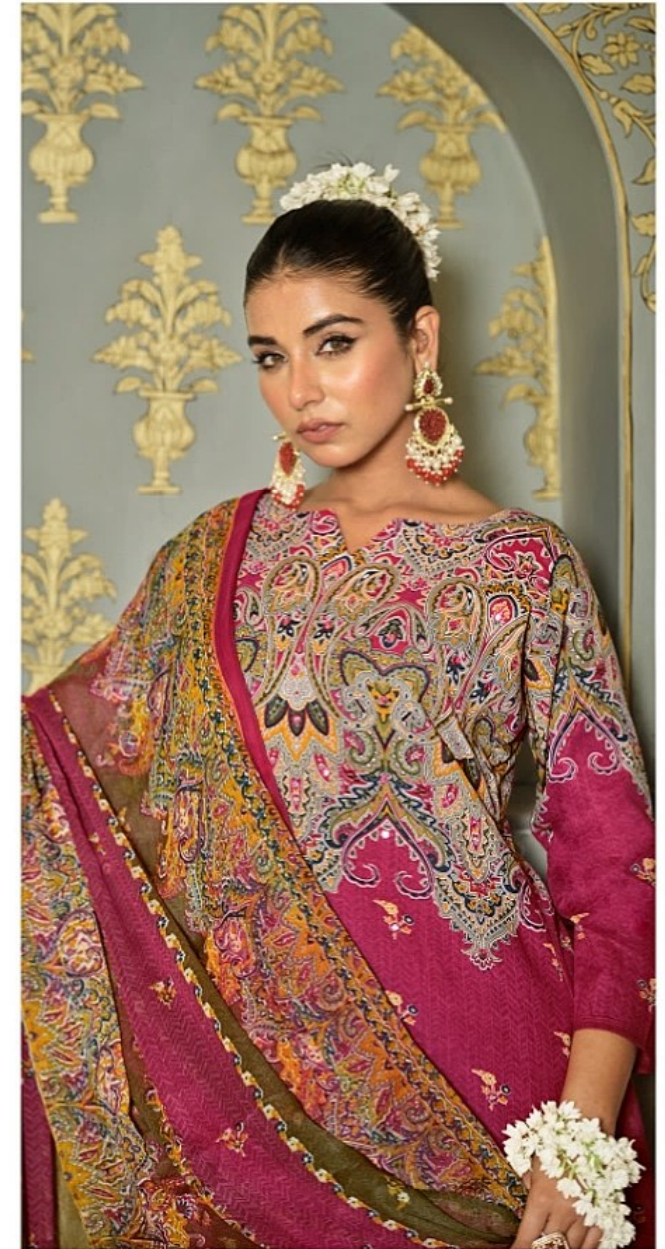
538-006



538-007



538-008





Style is knowing what suits you, who you are, and what your assets are. It's accepting it all.

538-004



TOP

100% PURE COTTON PRINT WITH MIRROR HANDWORK. (2.50 mtr apx)

DUPATTA

100% PURE NAZNEEN CHIFFON PRINT. (2.30 mtr apx)

BOTTOM

100% PURE COTTON SALWAR. (3.00 mtr apx)



[WWW.ZULFAT.IN](http://WWW.ZULFAT.IN)

FOLLOW US ON



THIS BOOK / CATALOGUE / LOGO / ARE PROTECTED UNDER COPYRIGHT ACT.  
AN ILLEGAL / UNAUTHORIZED REPRINT, PUBLISHING, REPRODUCTION, DISTRIBUTION AND MODIFICATION OF ANY IMAGES, PHOTOGRAPHS AND PRODUCTS,  
TOTALLY OR IN PART, FOR ANY PURPOSE, REASON OR CAUSE IS STRICTLY PROHIBITED AND PUNISHABLE UNDER LAW.



538-003

Style is knowing what suits you, where you are, and what you're wearing. It's exceeding it all.





 **Zulfat**<sup>®</sup>  
Designer Suits

**DILRUBA**

VOL-02





I think fashion can do a lot. Fashion is very popular, so it can help broadcast a message and reach a new generation.



 **Zulfat**<sup>®</sup>  
Designer Suits

"I think fashion can do a lot. Fashion is very popular, so it can help broadcast a message and reach a new generation."





 **Zulfat**<sup>®</sup>  
Designer Suits

*Fashion*  
**WEAVES**

What you wear is how you present yourself to the world, especially today, when human contacts are so quick. Fashion is instant language.



I think fashion can't be copied. Fashion is a story. I don't  
like to see a copy of my work. I want to see a new generation  
reach a new generation.

