



2006

THE KEY IS TO CONTRAST TWO ELEMENTS SO YOU DON'T END UP OVER DOING THE FEMININE QUOTIENT







2004

THE KEY IS TO CONTRAST TWO ELEMENTS SO YOU DON'T END UP OVER DOING THE FEMININE QUOTIENT







2005

BLEND OF COLORS THAT HIGHLIGHT EVERY CORNER OF  
THE ATTRACTIVE DESIGNS THAT IN TURN ADORN YOU WITH VAST BEAUTY







2005

WE'VE HANDPICKED THE KEY PIECES THAT YOU MUST GET YOUR HANDS ON BEFORE THEY FLY OFF THE RACKS





TOP : PURE COTTON PAKISTANI PRINT  
BOTTOM : LAWN DYED  
DUPATTA : COTTON PRINT



CHAAN TAARI

چاند تاري

COTTON KARACHI SUITS

\*\*Complimentary Copy Not For Sale\*\*



CHAAN TAARI

چاند تاري

COTTON KARACHI SUITS



کشمیر

کاش

KASHISH



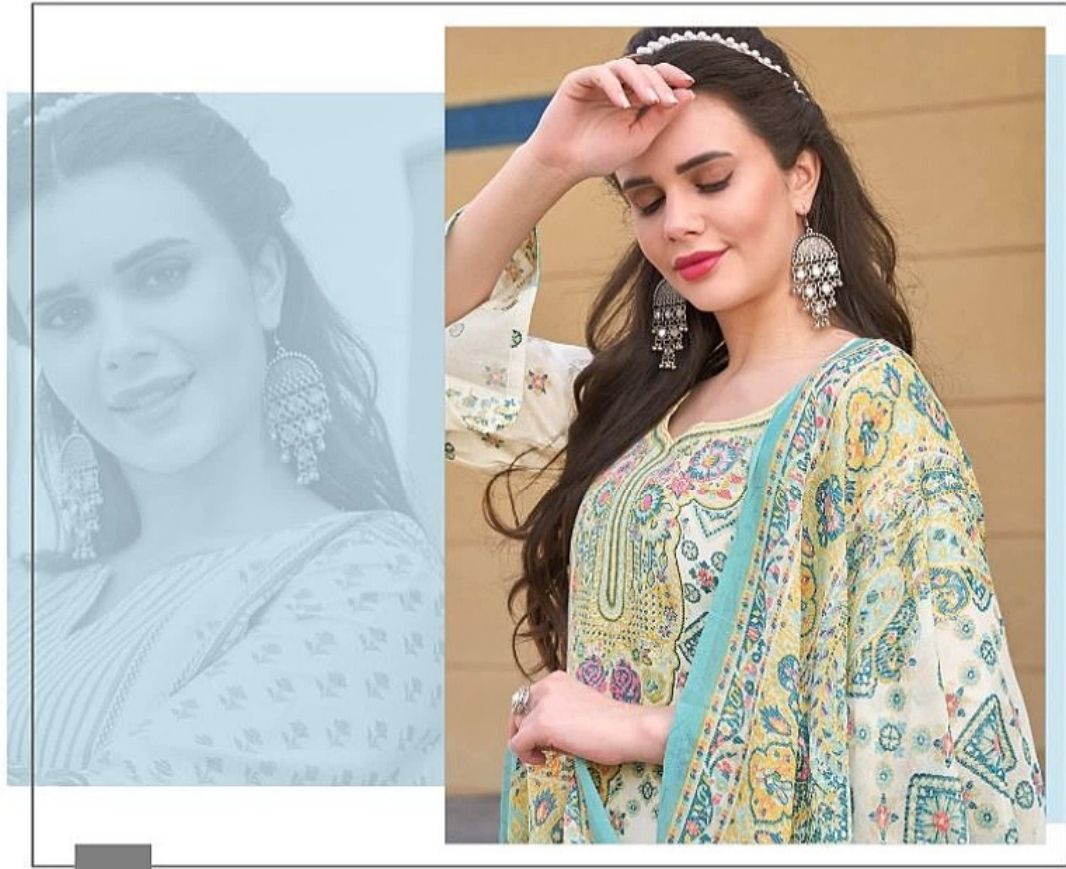


2008

WE'VE HANDPICKED THE KEY PIECES THAT YOU MUST GET YOUR HANDS ON BEFORE THEY FLY OFF THE RACKS







2002

FASHIONABLE TRIBUTES TO COLOR  
&  
SILHOUETTES THAT HAVE INSPIRED TRENDS AROUND THE WORLD







make an unforgettable impression with  
your inimitable style statement.

2007



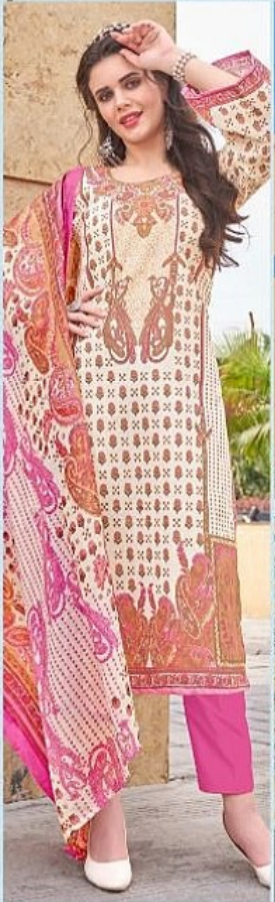




2001

CLASSIC STYLES WITH LUXURIOUS SOFT FABRICS  
ARE HIGHLIGHTED BY REFINED AND FEMININE DETAILS





1001



1002



1003



1004



1005



1006



1007



1008

کاش  
KASHISH