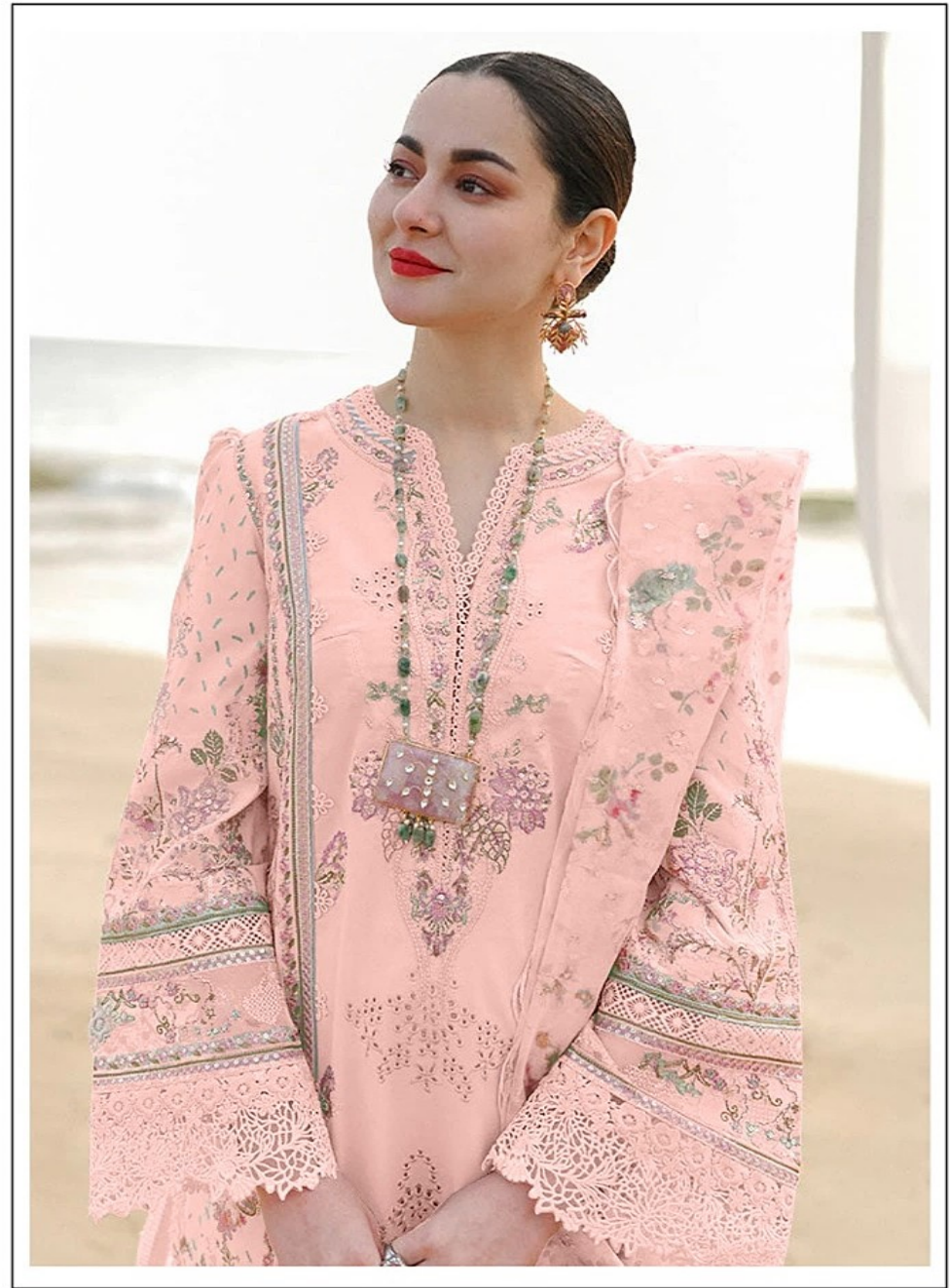




**TOP- CAMBRIC COTTON WITH HEVY EMBROIDERY**

**M-233 A**

**BOTTOM/INNER- SEMILOWN**



**TOP- CAMBRIC COTTON WITH HEVY EMBROIDERY**

M-233 B

**BOTTOM/INNER- SEMILOWN**



**TOP- CAMBRIC COTTON WITH HEVY EMBROIDERY**

**BOTTOM/INNER- SEMILOWN**

**DUPATTA/NET- PRINTED ORGENZA WITH EMBROIDERY WORK**

☑ DRY CLEAN ONLY.

☒ DO NOT USE ANY BLEACH OR STAIN REMOVING CHEMICALS.

☑ IRON THE FABRIC AT MODERATE TEMPERATURE.



**TOP- CAMBRIC COTTON WITH HEVY EMBROIDERY**

M-233 C

**BOTTOM/INNER- SEMILOWN**