



#### **WASHING INSTRUCTIONS**

**DO NOT USE ANY TYPE OF BLEACH OR STAIN REMOVING CHEMICALS BEFORE CUTTING / STITCHING. FABRIC SHOULD BE SOAKED IN WATER (ALL COMPONENTS SEPARATELY ) FOR 15 MINUTES**  
**DO NOT KEEP WET FABRIC IN TWISTED FORM IN ORDER TO AVOID COPY MRKS !**  
**WASH COLOURED AND WHITE FABRICS SEPARATELY**  
**IRON CLOTHES AT MODERATE TEMPERATURE. DO NOT DRY FABRIC IN DIRECT SUNLIGHT**



#### **WASHING INSTRUCTIONS**

**DO NOT USE ANY TYPE OF BLEACH OR STAIN REMOVING CHEMICALS BEFORE CUTTING / STITCHING. FABRIC SHOULD BE SOAKED IN WATER (ALL COMPONENTS SEPARATELY ) FOR 15 MINUTES**

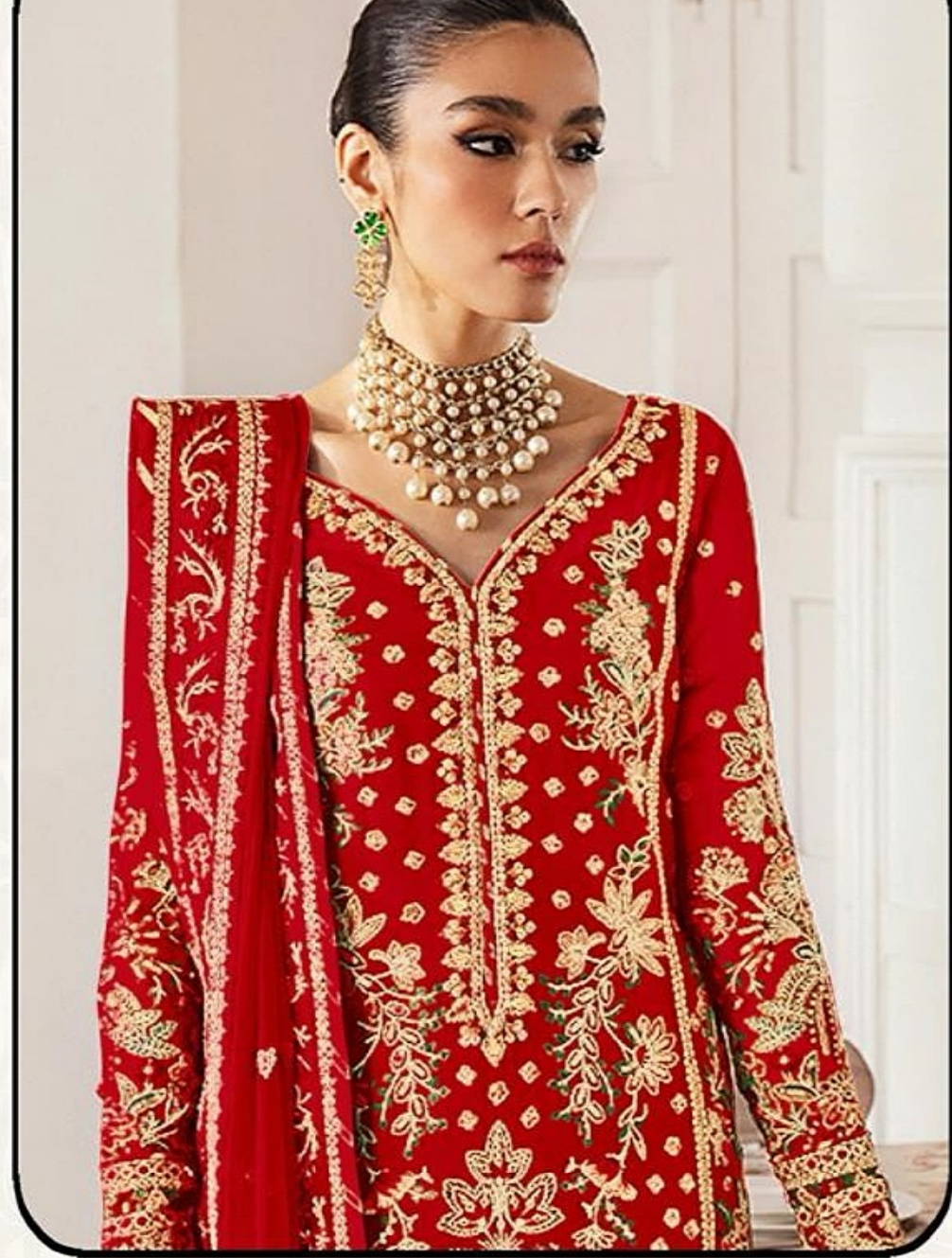
**DO NOT KEEP WET FABRIC IN TWISTED FORM IN ORDER TO AVOID COPY MRKS !  
WASH COLOURED AND WHITE FABRICS SEPARATELY**

**IRON CLOTHES AT MODERATE TEMPERATURE. DO NOT DRY FABRIC IN DIRECT SUNLIGHT**



#### **WASHING INSTRUCTIONS**

**DO NOT USE ANY TYPE OF BLEACH OR STAIN REMOVING CHEMICALS BEFORE CUTTING / STITCHING. FABRIC SHOULD BE SOAKED IN WATER (ALL COMPONENTS SEPARATELY ) FOR 15 MINUTES**  
**DO NOT KEEP WET FABRIC IN TWISTED FORM IN ORDER TO AVOID COPY MRKS !**  
**WASH COLOURED AND WHITE FABRICS SEPARATELY**  
**IRON CLOTHES AT MODERATE TEMPERATURE. DO NOT DRY FABRIC IN DIRECT SUNLIGHT**



#### **WASHING INSTRUCTIONS**

**DO NOT USE ANY TYPE OF BLEACH OR STAIN REMOVING CHEMICALS BEFORE CUTTING / STITCHING. FABRIC SHOULD BE SOAKED IN WATER (ALL COMPONENTS SEPARATELY) FOR 15 MINUTES**  
**DO NOT KEEP WET FABRIC IN TWISTED FORM IN ORDER TO AVOID COPY MRKS !**  
**WASH COLOURED AND WHITE FABRICS SEPARATELY**  
**IRON CLOTHES AT MODERATE TEMPERATURE. DO NOT DRY FABRIC IN DIRECT SUNLIGHT**



D.NO.1469 M



D.NO.1469 N



D.NO.1469 O



D.NO.1469 P