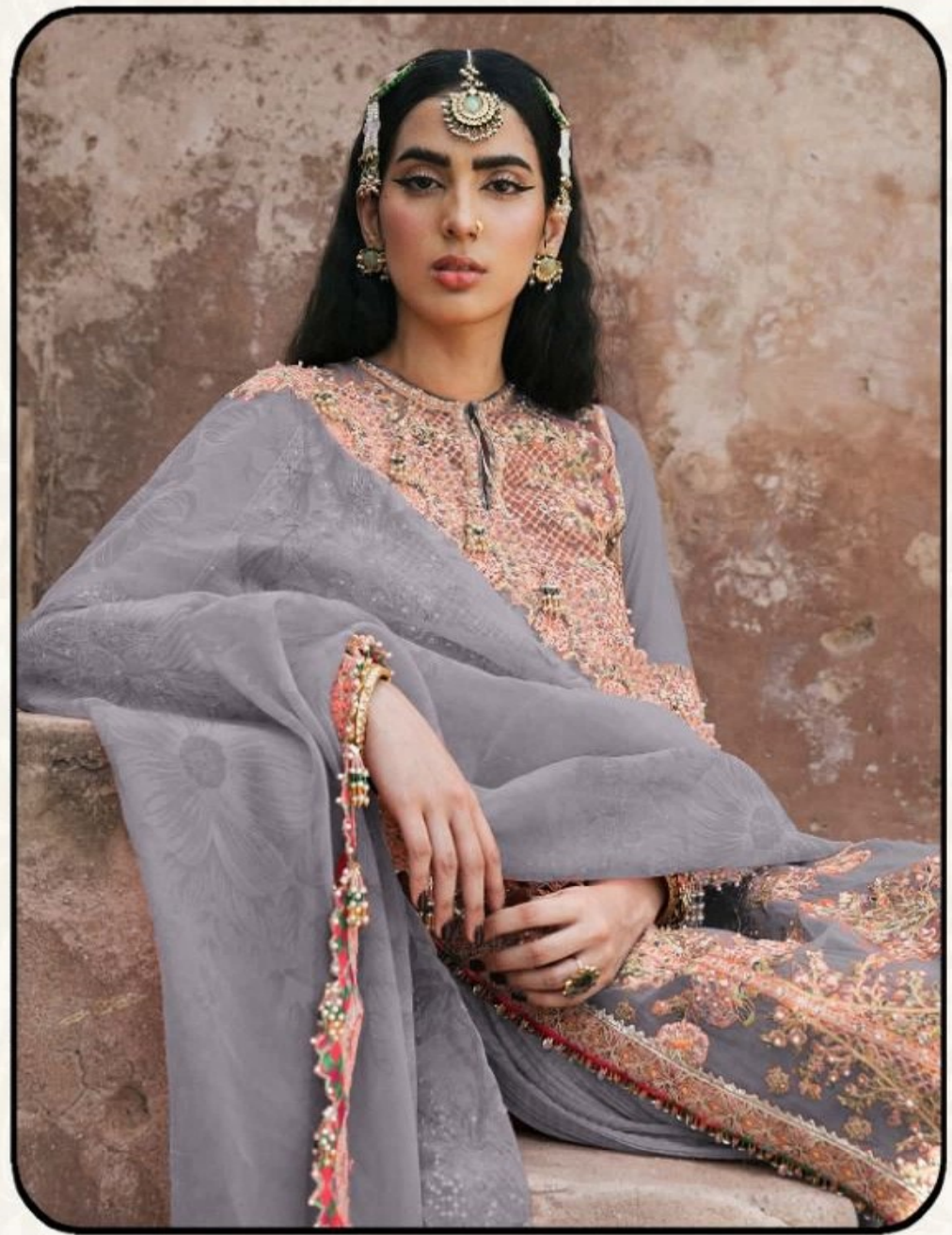




RINAZ
- THE FASHION DESIGNER

RINAZ
- THE FASHION DESIGNER

RINAZ
- THE FASHION DESIGNER

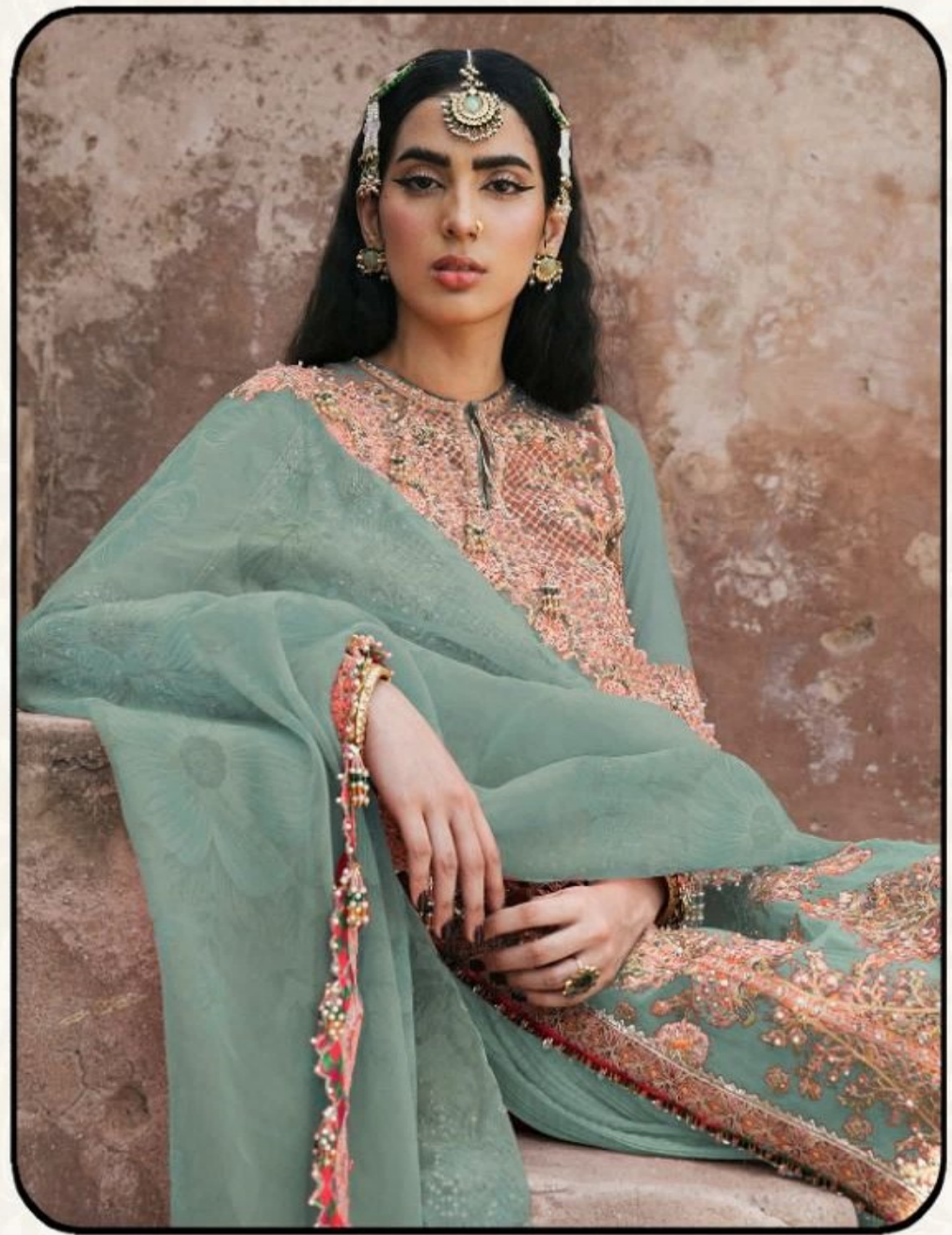


WASHING INSTRUCTIONS

DO NOT USE ANY TYPE OF BLEACH OR STAIN REMOVING CHEMICALS BEFORE CUTTING / STITCHING. FABRIC SHOULD BE SOAKED IN WATER (ALL COMPONENTS SEPARATELY) FOR 15 MINUTES

**DO NOT KEEP WET FABRIC IN TWISTED FORM IN ORDER TO AVOID COPY MRKS !
WASH COLOURED AND WHITE FABRICS SEPARATELY**

IRON CLOTHES AT MODERATE TEMPERATURE ! DO NOT DRY FABRIC IN DIRECT SUNLIGHT

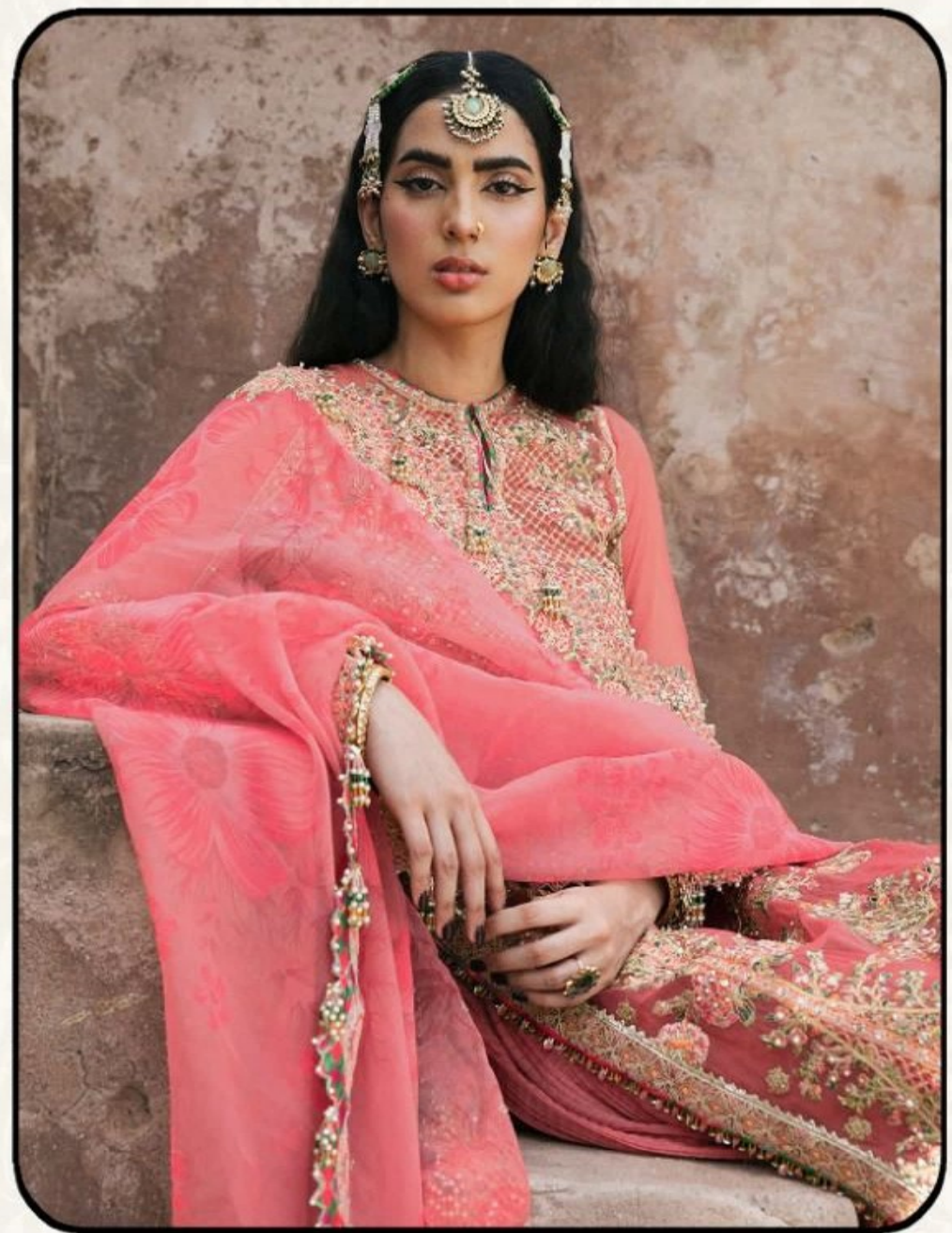


WASHING INSTRUCTIONS

DO NOT USE ANY TYPE OF BLEACH OR STAIN REMOVING CHEMICALS BEFORE CUTTING / STITCHING. FABRIC SHOULD BE SOAKED IN WATER (ALL COMPONENTS SEPARATELY) FOR 15 MINUTES

**DO NOT KEEP WET FABRIC IN TWISTED FORM IN ORDER TO AVOID COPY MRKS !
WASH COLOURED AND WHITE FABRICS SEPARATELY**

IRON CLOTHES AT MODERATE TEMPERATURE ! DO NOT DRY FABRIC IN DIRECT SUNLIGHT



WASHING INSTRUCTIONS

DO NOT USE ANY TYPE OF BLEACH OR STAIN REMOVING CHEMICALS BEFORE CUTTING / STITCHING. FABRIC SHOULD BE SOAKED IN WATER (ALL COMPONENTS SEPARATELY) FOR 15 MINUTES

**DO NOT KEEP WET FABRIC IN TWISTED FORM IN ORDER TO AVOID COPY MRKS !
WASH COLOURED AND WHITE FABRICS SEPARATELY**

IRON CLOTHES AT MODERATE TEMPERATURE ! DO NOT DRY FABRIC IN DIRECT SUNLIGHT



RINAZ
FABRICATION

100% COTON
MONTMARTRE - PARIS
FRANCE



100% COTON
MONTMARTRE - PARIS
FRANCE

RINAZ
FABRICATION



RINAZ
FABRICATION



RINAZ
FASHION
... THE FASHION DESIGNER OF INDIA ...

RINAZ
FASHION
... THE FASHION DESIGNER OF INDIA ...

TOP: 80% COTTON, 20% LACE
BOTTOM: 100% COTTON
DESIGNER: RINAZ FASHION



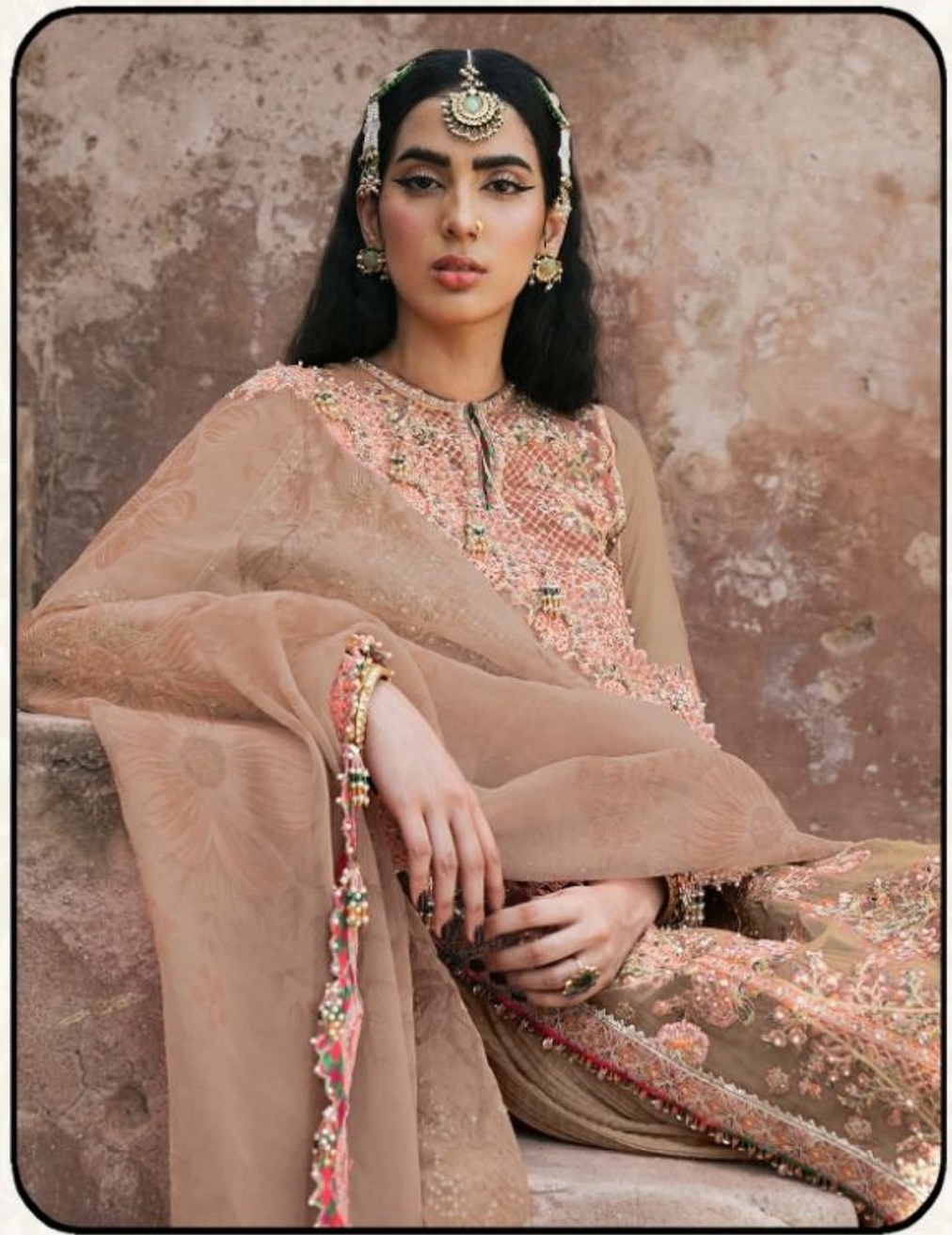
... THE FASHION DESIGNER OF INDIA ...

RINAZ
FASHION
... THE FASHION DESIGNER OF INDIA ...





RINAZ
FASHION
— THE FASHION DESIGNER IN INDIA —



WASHING INSTRUCTIONS

DO NOT USE ANY TYPE OF BLEACH OR STAIN REMOVING CHEMICALS BEFORE CUTTING / STITCHING. FABRIC SHOULD BE SOAKED IN WATER (ALL COMPONENTS SEPARATELY) FOR 15 MINUTES

**DO NOT KEEP WET FABRIC IN TWISTED FORM IN ORDER TO AVOID COPY MRKS !
WASH COLOURED AND WHITE FABRICS SEPARATELY**

IRON CLOTHES AT MODERATE TEMPERATURE ! DO NOT DRY FABRIC IN DIRECT SUNLIGHT





RINAZ
FASHION
- THE HARMONY OF DESIGN AND STYLE -

RINAZ
FASHION

RINAZ
FASHION

100% POLYESTER
HANDMADE
DESIGNER - BANGLADESH



100% POLYESTER
HANDMADE
DESIGNER - BANGLADESH

RINAZ
FASHION





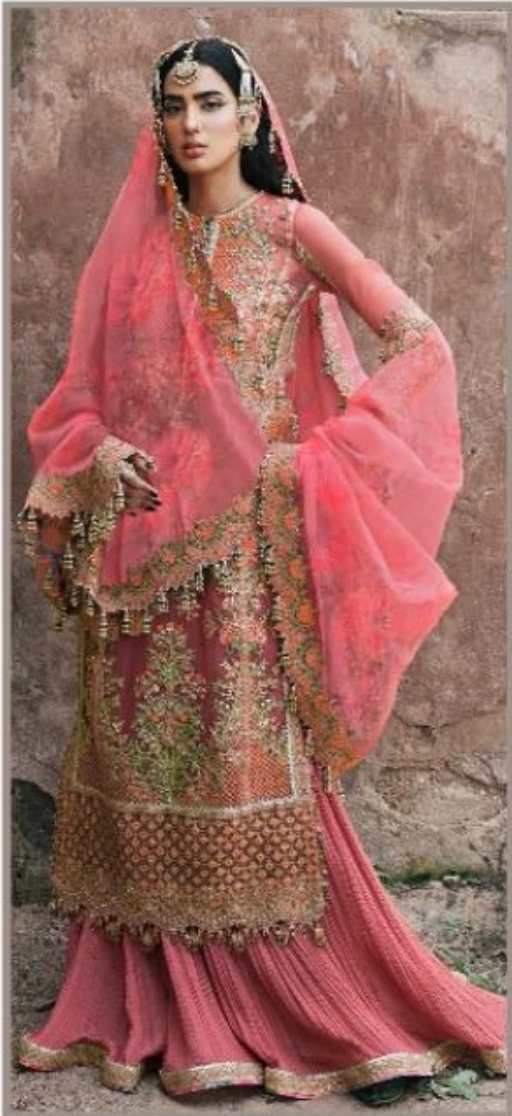
RINAZ FASHION

RINAZ FASHION
— THE HIGHEST QUALITY IN PAKISTAN —

TOP - FOX GEORGETTE

BOTTOM+INNER - HEAVY SANTOON

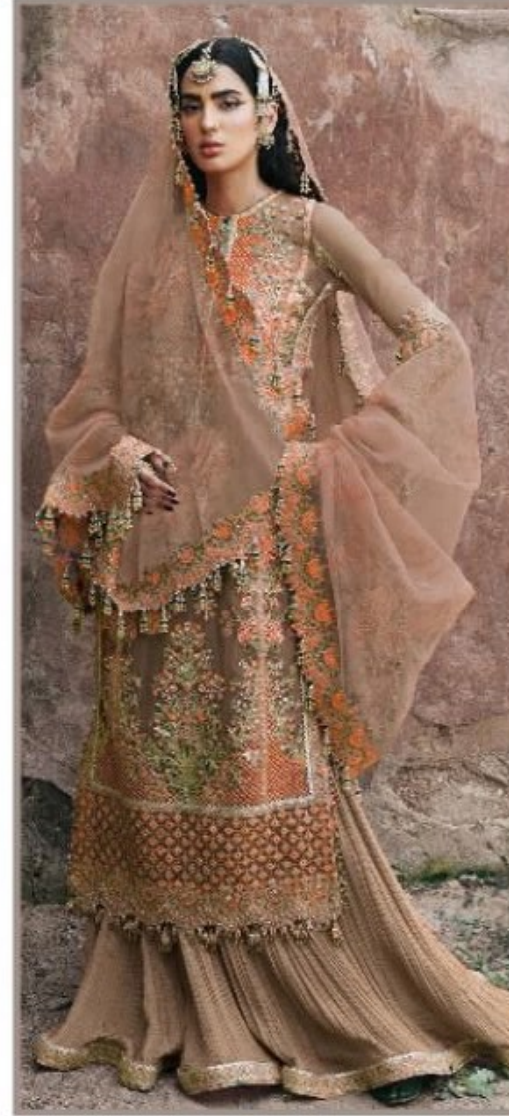
DUPATTA - ORGANZA SILK



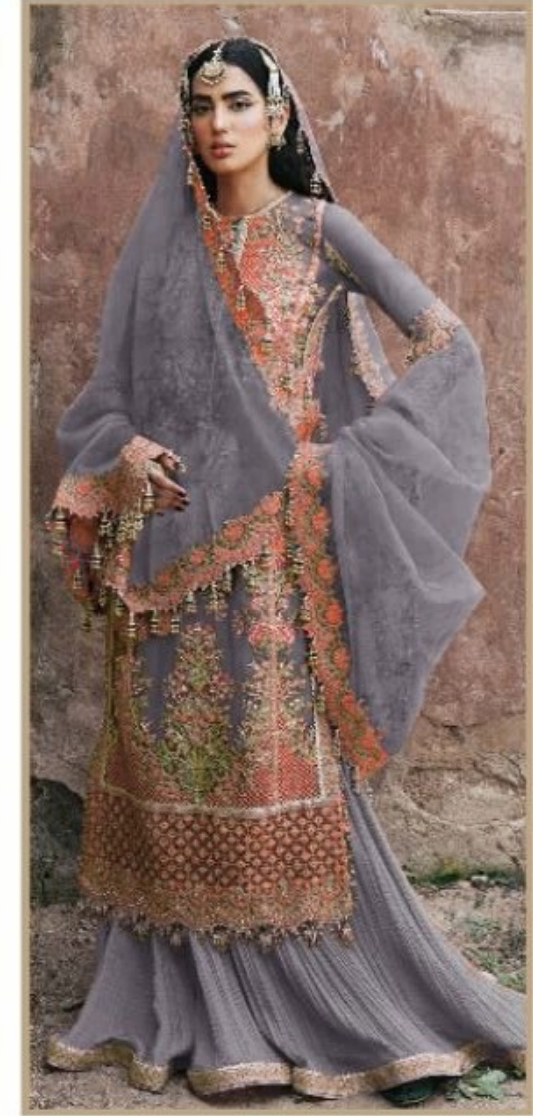
D.NO.1379 E



D.NO.1379 F



D.NO.1379 G



D.NO.1379 H



RINAZ FASHION

RINAZ FASHION
THE FASHION DESIGNER'S PICK

RINAZ FASHION

THE FASHIONABILITY
OF THE FASHIONABILITY
IN THE FASHIONABILITY



THE FASHIONABILITY
OF THE FASHIONABILITY
IN THE FASHIONABILITY

RINAZ FASHION



RINAZ FASHION