



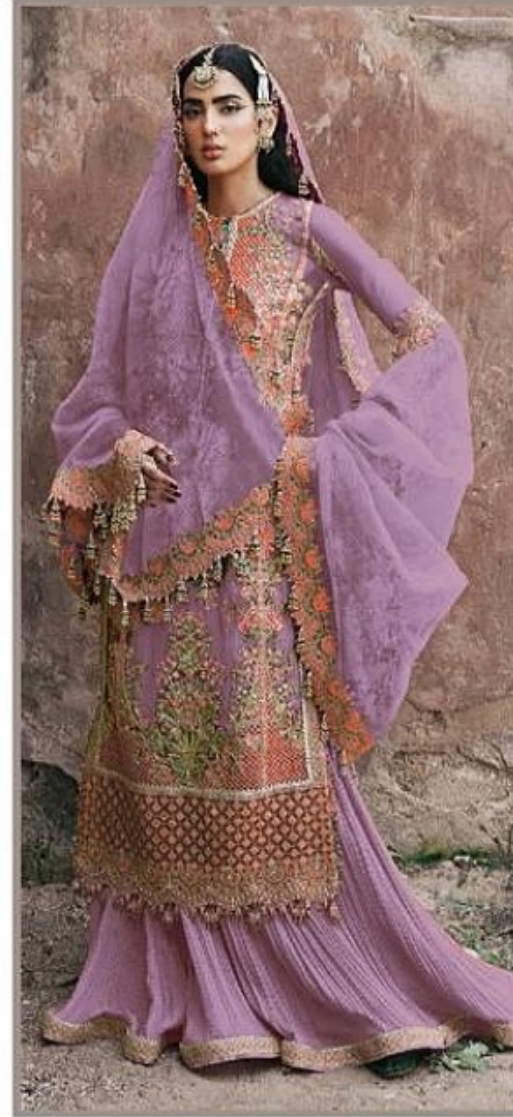
TOP - FOUX GEORGETTE  
BOTTOM+INNER - HEAVY SHANTUN  
DUPATTA - DIGITAL PRINT EMBROIDRY



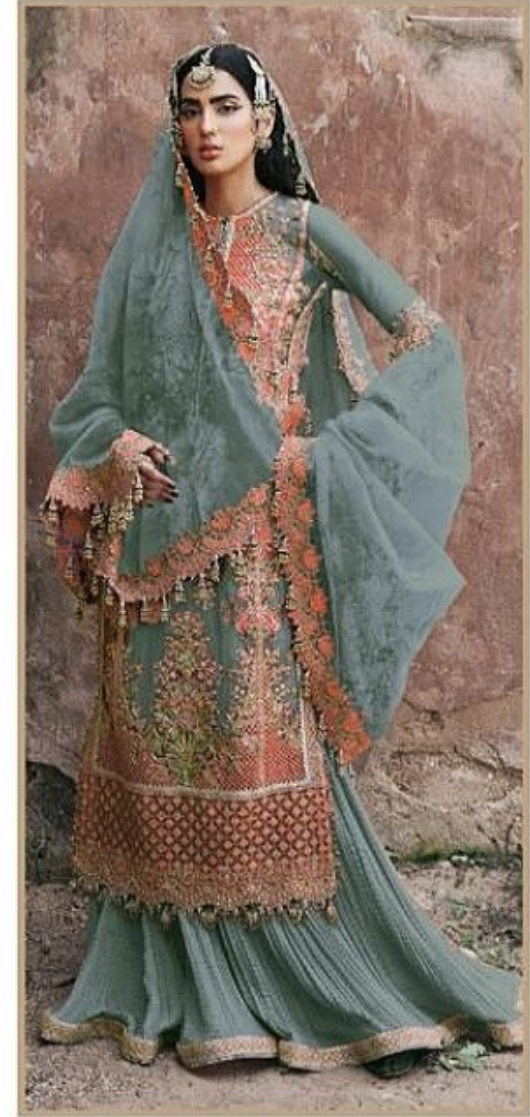
D.NO.1436 A 1



D.NO.1436 B 1

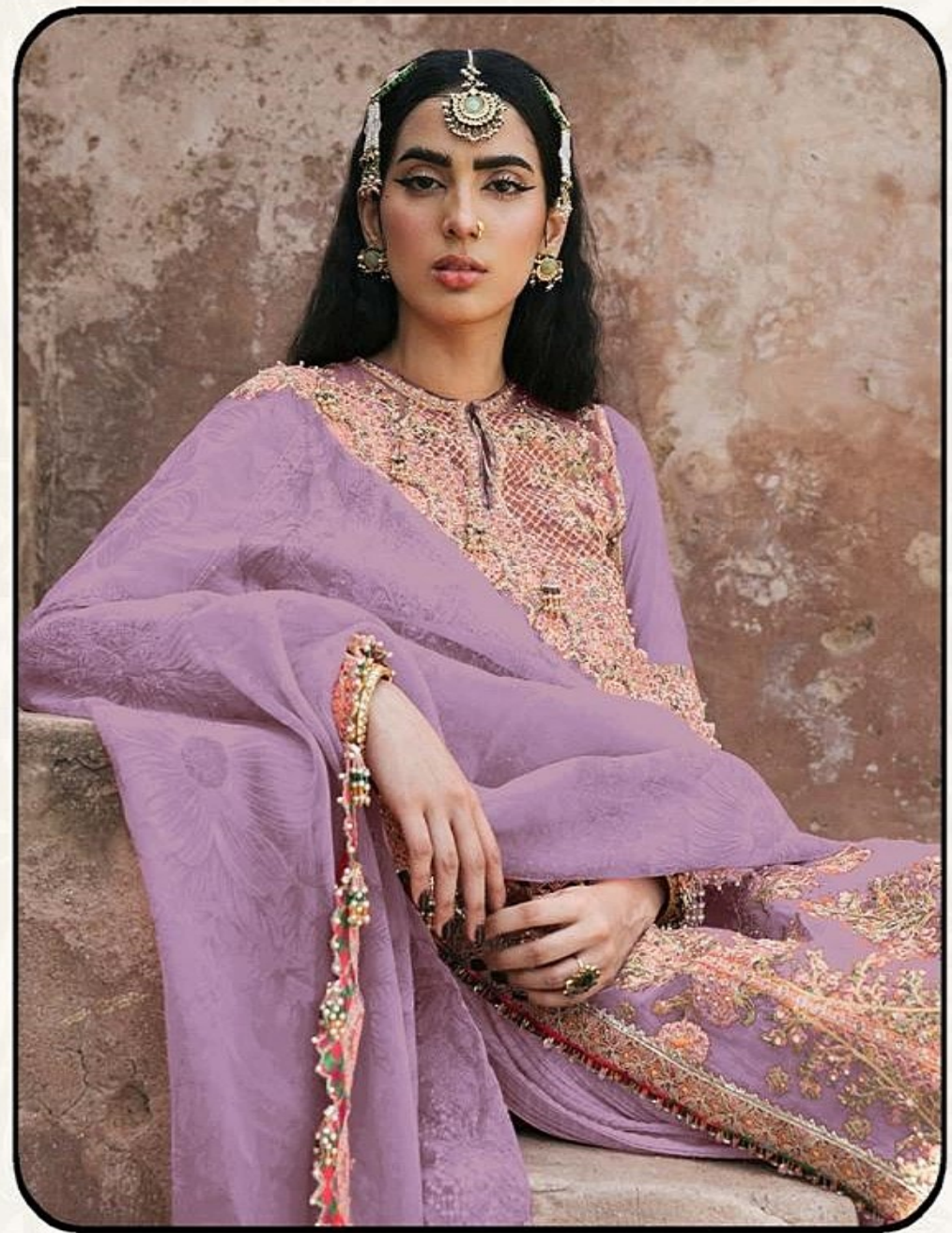


D.NO.1436 C 1



D.NO.1436 D 1





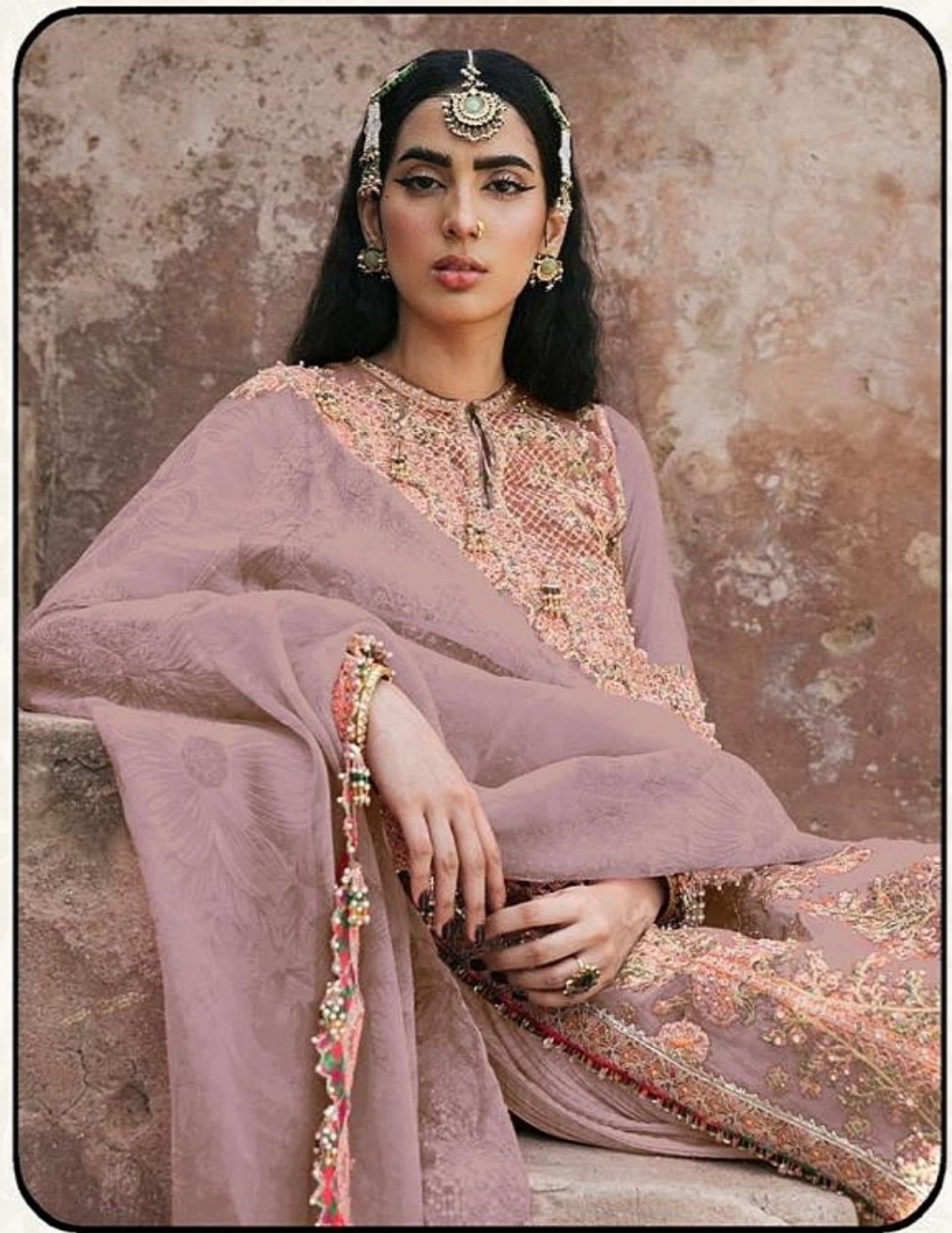
#### **WASHING INSTRUCTIONS**

**DO NOT USE ANY TYPE OF BLEACH OR STAIN REMOVING CHEMICALS BEFORE CUTTING / STITCHING. FABRIC SHOULD BE SOAKED IN WATER (ALL COMPONENTS SEPARATELY ) FOR 15 MINUTES**

**DO NOT KEEP WET FABRIC IN TWISTED FORM IN ORDER TO AVOID COPY MRKS !  
WASH COLOURED AND WHITE FABRICS SEPARATELY**

**IRON CLOTHES AT MODERATE TEMPERATURE ! DO NOT DRY FABRIC IN DIRECT SUNLIGHT**





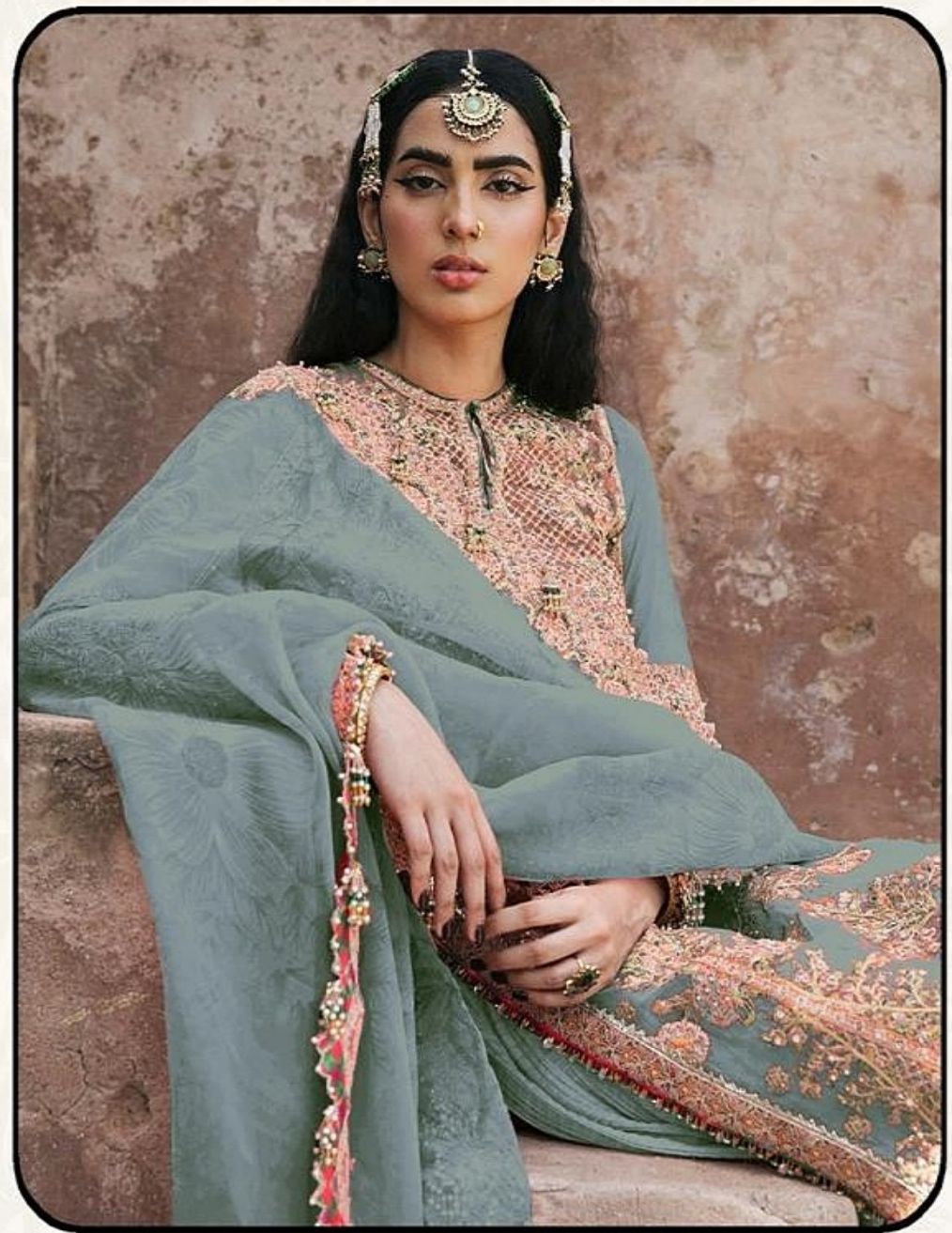
#### **WASHING INSTRUCTIONS**

**DO NOT USE ANY TYPE OF BLEACH OR STAIN REMOVING CHEMICALS BEFORE CUTTING / STITCHING. FABRIC SHOULD BE SOAKED IN WATER (ALL COMPONENTS SEPARATELY ) FOR 15 MINUTES**

**DO NOT KEEP WET FABRIC IN TWISTED FORM IN ORDER TO AVOID COPY MRKS !  
WASH COLOURED AND WHITE FABRICS SEPARATELY**

**IRON CLOTHES AT MODERATE TEMPERATURE ! DO NOT DRY FABRIC IN DIRECT SUNLIGHT**





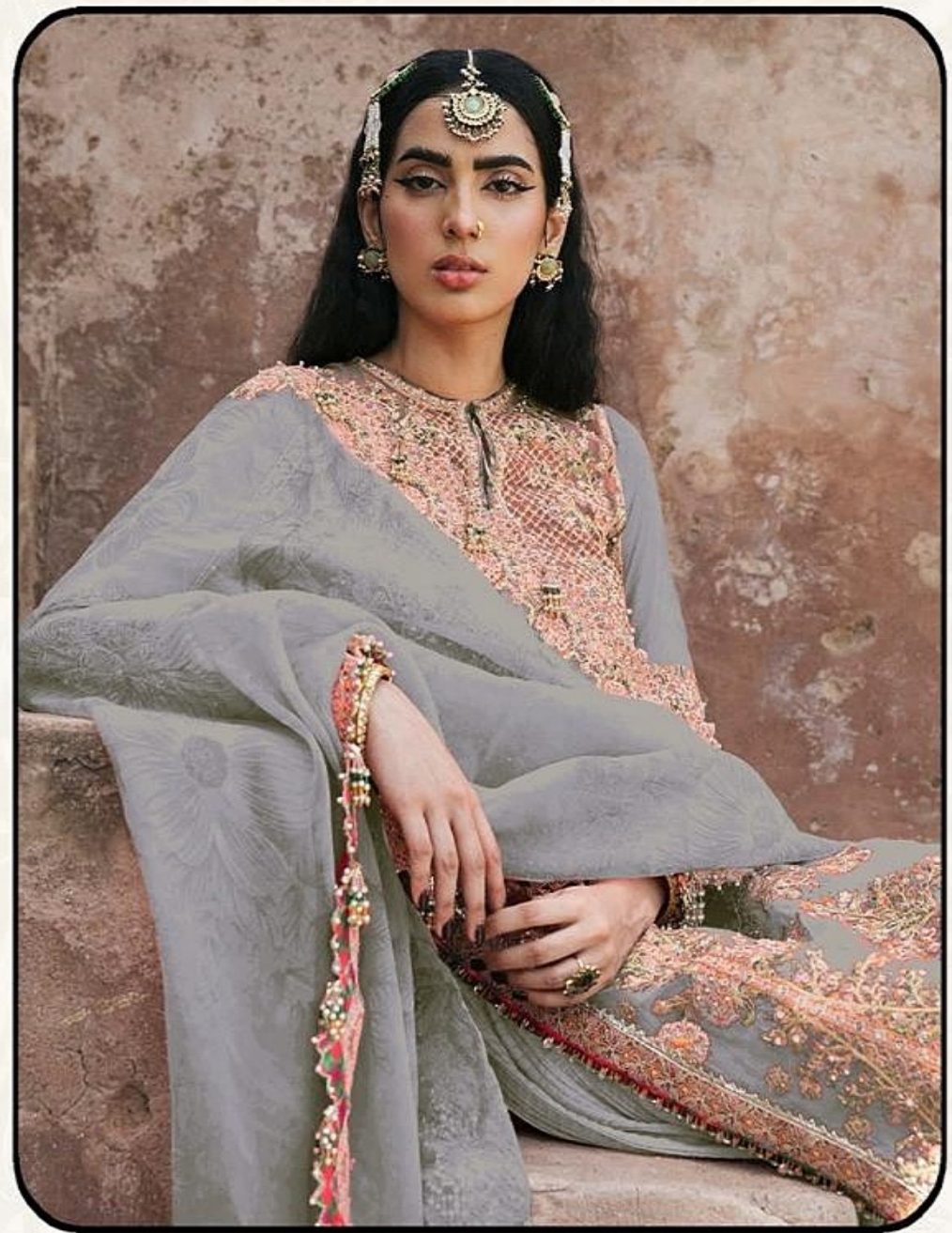
#### **WASHING INSTRUCTIONS**

**DO NOT USE ANY TYPE OF BLEACH OR STAIN REMOVING CHEMICALS BEFORE CUTTING / STITCHING. FABRIC SHOULD BE SOAKED IN WATER (ALL COMPONENTS SEPARATELY ) FOR 15 MINUTES**

**DO NOT KEEP WET FABRIC IN TWISTED FORM IN ORDER TO AVOID COPY MRKS !  
WASH COLOURED AND WHITE FABRICS SEPARATELY**

**IRON CLOTHES AT MODERATE TEMPERATURE I DO NOT DRY FABRIC IN DIRECT SUNLIGHT**





#### **WASHING INSTRUCTIONS**

**DO NOT USE ANY TYPE OF BLEACH OR STAIN REMOVING CHEMICALS BEFORE CUTTING / STITCHING. FABRIC SHOULD BE SOAKED IN WATER (ALL COMPONENTS SEPARATELY) FOR 15 MINUTES**

**DO NOT KEEP WET FABRIC IN TWISTED FORM IN ORDER TO AVOID COPY MRKS !  
WASH COLOURED AND WHITE FABRICS SEPARATELY**

**IRON CLOTHES AT MODERATE TEMPERATURE ! DO NOT DRY FABRIC IN DIRECT SUNLIGHT**